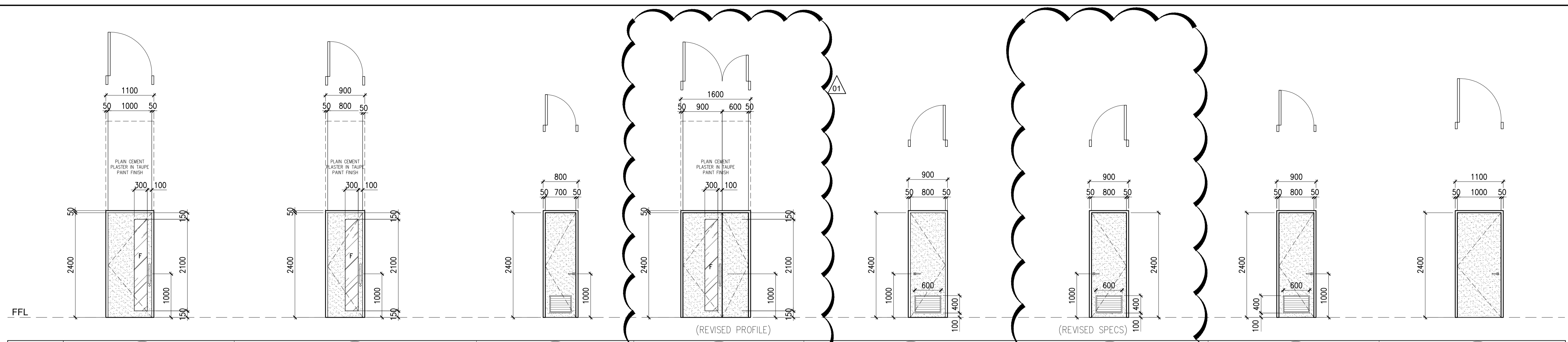
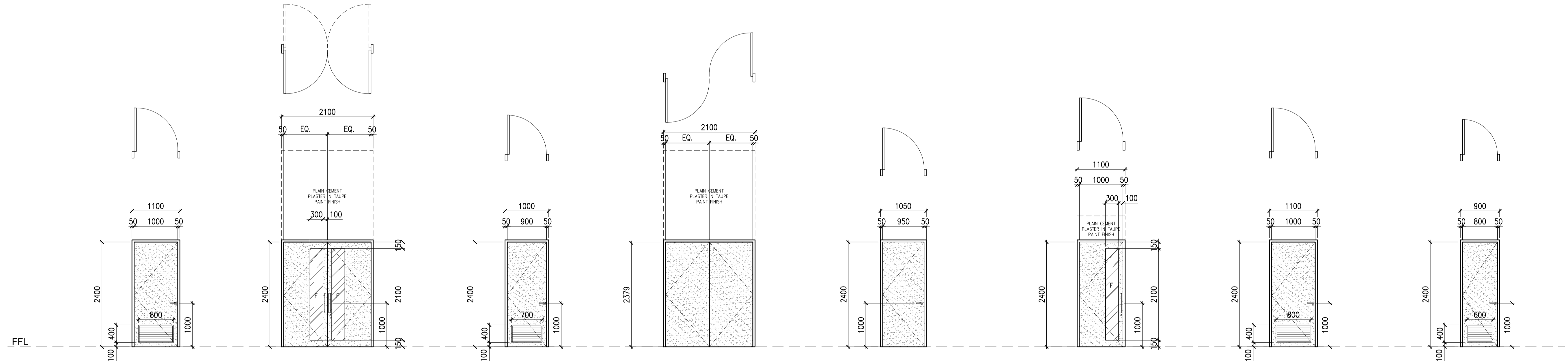


ANNEX “A”

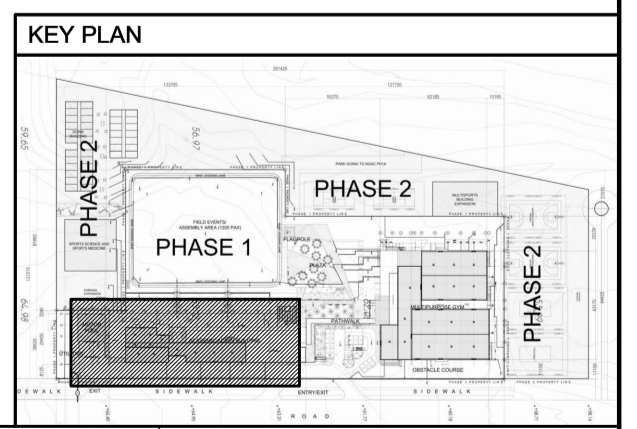


DESIGNATION	DG 1	DG 2	DG 3	DG 4	DG 5	DG 5,A	DG 6	DG 7
LOCATION	GUIDANCE OFFICE, LIBRARY, FACILITY USAGE, ADMIN LOUNGE, CONFERENCE Rm, 2nd FLOOR, 1st FLOOR OFFICE, 2nd FLOOR OFFICE, ADMIN SERV. OFFICE, SEC. MONITORING & SURV. OFFICE, MAINT. & CAMPUS REGISTRAR	OFFICE OF CHIEF GUIDANCE COUNSELOR, COUNSELING ROOMS, CATERING WORKSTATION STAFF, SPECIALIST RM, OFFICE OF AGENS DIV. HEAD, OFFICE OF IDENTITY CONC. DIR. FOR ADMIN. & COMM., OFFICE OF MAIL DELIV., OFFICE OF STAFF DIV. HEAD, OFFICE OF FORM. DIR., PHYS. PLANT OFFICE, OFFICE OF THE HR. HEAD, AHR MEETING RM, OFFICE OF CAMPUS/ASST. REGISTRAR	WFOUNDER STAFF TOILET, OFFICE OF AGENS DIV. HEAD TOILET, 2ND OFFICE TOILET, OFFICE OF MAINT. DIR. SEC. TOILET, CLINIC TOILET	AHR DIVISION	CLINIC STD., MED. SUPPLY STD., GUIDANCE RECORDS & FILING STD., LIBRARY ARCHIVES, KIT, STAFF LOCKER, MAINT. DIR. SEC. RECORDS/FILING, ID CAPTURING RM, SECUR. STD., HALLWAY STD. RM., AHR STD., AHR RECORDS/FILING, ID CAPTURING RM.	NATIONAL REGISTRAR STD., EE/AUX RM 1 & 2	FACULTY M/F TOILETS,	FIRE EXITS
QUANTITY	21 SETS REQUIRED	14 SETS REQUIRED	5 SETS REQUIRED	1 SET REQUIRED	13 SETS REQUIRED	4 SETS REQUIRED	2 SETS REQUIRED	2 SETS REQUIRED
TYPE	SWING DOOR	SWING DOOR	SWING DOOR (W/ LOUVER)	DOUBLE SWING DOOR	SWING DOOR W/ LOUVER	SWING DOOR W/ LOUVER	SWING DOOR W/ LOUVER	SWING DOOR
FINISH	GA22 METAL DOOR IN TAUPE EPOXY PAINT FINISH W/ 10MM THK. TEMPERED CLEAR GLASS VISION PANEL	GA22 METAL DOOR IN TAUPE EPOXY PAINT FINISH W/ 10MM THK. TEMPERED CLEAR GLASS VISION PANEL	GA22 METAL DOOR IN EPOXY PAINT FINISH TO MATCH ADJACENT WALL COLOR	GA22 METAL DOOR IN TAUPE EPOXY PAINT FINISH W/ 10MM THK. TEMPERED CLEAR GLASS VISION PANEL	GA22 METAL DOOR IN EPOXY PAINT FINISH TO MATCH ADJACENT WALL COLOR	GA18 METAL DOOR (1.5-HOUR FIRE RATING) IN EPOXY PAINT FINISH TO MATCH ADJACENT WALL COLOR	GA22 METAL DOOR IN EPOXY PAINT FINISH TO MATCH ADJACENT WALL COLOR	(1.5 HOURS FIRE-RATED) GA18 METAL DOOR IN EPOXY PAINT FINISH TO MATCH ADJACENT WALL COLOR
HARDWARE	HINGE: 4-HEAVY DUTY - CONCEALED HINGE LOCKSET: HEAVY DUTY - DEADBOLT LOCK HANDLE: 2- LINEAR PULL HANDLE JAMB: GA22 HOLLOW METAL SINGLE RABBET ACCESSORIES: DOOR STOPPER; DOOR CLOSER	HINGE: 4-HEAVY DUTY - CONCEALED HINGE LOCKSET: KEYED LEVER HANDLE HANDLE: N/A (COMBINED WITH LOCKSET) JAMB: GA22 HOLLOW METAL SINGLE RABBET ACCESSORIES: DOOR STOPPER; DOOR CLOSER	HINGE: 4-HEAVY DUTY - CONCEALED HINGE LOCKSET: KEYED LEVER HANDLE HANDLE: N/A (COMBINED WITH LOCKSET) JAMB: GA22 HOLLOW METAL SINGLE RABBET ACCESSORIES: DOOR STOPPER; DOOR CLOSER	HINGE: 8-HEAVY DUTY - CONCEALED HINGE LOCKSET: HEAVY DUTY - DEADBOLT LOCK HANDLE: 2- LINEAR PULL HANDLE JAMB: GA22 HOLLOW METAL SINGLE RABBET ACCESSORIES: DOOR CLOSER; DOOR STOPPER, FLUSH BOLT	HINGE: 4-HEAVY DUTY - BUTT HINGE LOCKSET: KEYED LEVER HANDLE HANDLE: N/A (COMBINED WITH LOCKSET) JAMB: GA22 HOLLOW METAL SINGLE RABBET ACCESSORIES: DOOR STOPPER	HINGE: 4-HEAVY DUTY - CONCEALED HINGE LOCKSET: KEYED LEVER HANDLE HANDLE: N/A (COMBINED WITH LOCKSET) JAMB: GA16 HOLLOW METAL SINGLE RABBET ACCESSORIES: DOOR STOPPER	HINGE: 4-HEAVY DUTY - CONCEALED HINGE LOCKSET: KEYED LEVER HANDLE HANDLE: N/A (COMBINED WITH LOCKSET) JAMB: GA22 HOLLOW METAL SINGLE RABBET ACCESSORIES: DOOR STOPPER; DOOR CLOSER	HINGE: 4-HEAVY DUTY - CONCEALED HINGE LOCKSET: PANIC HARDWARE HANDLE: LEVER TYPE JAMB: GA16 HOLLOW METAL SINGLE RABBET ACCESSORIES:



DESIGNATION	DG 8	DG 9	DG 10	DG 11	DG 12	DS 1	DS 2	DS 3
LOCATION	PWD COMFORT ROOMS, JANITORIAL ROOM;	CLINIC, CAFETERIA KITCHEN	M/F TOILETS, SECURITY TEAM COMFORT ROOM, GENDER NEUTRAL TOILET @ LIBRARY, BREASTFEEDING AREA	DROP OFF/ DELIVERY AREA	COLD KITCHEN, CAFETERIA KITCHEN STORAGE ROOM	CLASSROOMS, NAS EXEC. DIR. OFFICE, LEAD OFFICE, PICT OFFICE, ASEC OFFICE; FINANCE DIV., SASS OFFICE	GENDER NEUTRAL COMFORT RM @ ADMIN, PWD COMFORT Rms M/F TOILETS @ CLASSROOMS	GENDER NEUTRAL TOILET @ CLASSROOMS
QUANTITY	4 SETS REQUIRED	2 SETS REQUIRED	7 SETS REQUIRED	1 SET REQUIRED	2 SETS REQUIRED	36 SETS REQUIRED	5 SETS REQUIRED	1 SET REQUIRED
TYPE	SWING DOOR W/ LOUVER	DOUBLE SWING DOOR	SWING DOOR W/ LOUVER	DOUBLE EGRESS DOOR	SWING DOOR	SWING DOOR	SWING DOOR W/ LOUVER	SWING DOOR W/ LOUVER
FINISH	GA22 METAL DOOR IN EPOXY PAINT FINISH TO MATCH ADJACENT WALL COLOR	GA22 METAL DOOR IN TAUPE EPOXY PAINT FINISH W/ 10MM THK. TEMPERED CLEAR GLASS VISION PANEL	GA22 METAL DOOR IN EPOXY PAINT FINISH TO MATCH ADJACENT WALL COLOR	GA22 METAL DOOR IN TAUPE EPOXY PAINT FINISH	GA22 METAL DOOR IN EPOXY PAINT FINISH TO MATCH ADJACENT WALL COLOR	GA22 METAL DOOR IN TAUPE EPOXY PAINT FINISH W/ 10MM THK. TEMPERED CLEAR GLASS VISION PANEL	GA22 METAL DOOR IN EPOXY PAINT FINISH TO MATCH ADJACENT WALL COLOR	GA22 METAL DOOR IN EPOXY PAINT FINISH TO MATCH ADJACENT WALL COLOR
HARDWARE	HINGE: 4-HEAVY DUTY - CONCEALED HINGE LOCKSET: KEYED LEVER HANDLE HANDLE: N/A (COMBINED WITH LOCKSET) JAMB: GA22 HOLLOW METAL SINGLE RABBET ACCESSORIES: DOOR STOPPER; DOOR CLOSER	HINGE: 4-HEAVY DUTY - FLOOR SPRING LOCKSET: HEAVY DUTY - DEADBOLT LOCK HANDLE: 4- LINEAR PULL HANDLE JAMB: GA22 HOLLOW METAL CASED OPENING ACCESSORIES: DOOR CLOSER; DOOR STOPPER; FLUSH BOLT	HINGE: 4-HEAVY DUTY - BUTT HINGE LOCKSET: KEYED LEVER HANDLE HANDLE: N/A (COMBINED WITH LOCKSET) JAMB: GA22 HOLLOW METAL SINGLE RABBET ACCESSORIES: DOOR STOPPER	HINGE: 4-HEAVY DUTY - BUTT HINGE LOCKSET: HEAVY DUTY DEADBOLT-LOCK HANDLE: PUSH/ KICK PLATE JAMB: GA22 HOLLOW METAL DOUBLE EGRESS ACCESSORIES: DOOR STOPPER; FLUSH BOLT	HINGE: 4-HEAVY DUTY - BUTT HINGE LOCKSET: KEYED LEVER HANDLE HANDLE: N/A (COMBINED WITH LOCKSET) JAMB: GA22 HOLLOW METAL SINGLE RABBET ACCESSORIES: DOOR STOPPER	HINGE: 4-HEAVY DUTY - CONCEALED HINGE LOCKSET: HEAVY DUTY - DEADBOLT LOCK HANDLE: 2- LINEAR PULL HANDLE JAMB: GA22 HOLLOW METAL SINGLE RABBET ACCESSORIES: DOOR CLOSER; DOOR STOPPER	HINGE: 4-HEAVY DUTY - CONCEALED HINGE LOCKSET: KEYED LEVER HANDLE HANDLE: N/A (COMBINED WITH LOCKSET) JAMB: GA22 HOLLOW METAL SINGLE RABBET ACCESSORIES: DOOR STOPPER	HINGE: 4-HEAVY DUTY - CONCEALED HINGE LOCKSET: KEYED LEVER HANDLE HANDLE: N/A (COMBINED WITH LOCKSET) JAMB: GA22 HOLLOW METAL SINGLE RABBET ACCESSORIES: DOOR STOPPER

1 DOORS, WINDOWS & PARTITIONS SCHEDULE
A-5.01 SCALE 1:50M



OWNER BCDA Basic Conversion and Development Authority RYAN S. GALURA OIC, ESSD Clerk	CONSTRUCTION MANAGEMENT AND SUPERVISION FILIPINAS DRAVO CORPORATION Consulting Engineering & Architectural Services JOSEPH ROMMEL D.C. LICLIAN Senior Project Manager	GENERAL CONTRACTOR HILMARCS CONSTRUCTION CORPORATION 1835 E. RODRIGUEZ SR. AVENUE CUBAO, QUEZON CITY TEL. NO. 6544155	ARCHITECT ROYAL CHRISTOPHER L. PINEDA, UAP ARCHITECT PRC No: 0013877 TIN No: 198-759-613 PTR No: A-5069898 Date issued: JAN. 07, 2021	PROJECT TITLE NATIONAL ACADEMY OF SPORTS (PHASE 1) LOCATION: NCC, MUNICIPALITY OF CAPAS, TARLAC	SHEET CONTENTS DOORS, WINDOWS & PARTITIONS SCHEDULE	REVISIONS: No. Description Date Checked Authorized 01 REVISED PROFILE/SPECS 10/16/2021 RVJ RCP	SHEET NO. A-R-5.01 Drawn By: MR/KC/AA Checked By: MR/RVJ/RCP Date Issued: NOVEMBER 10, 2021
---	--	---	--	--	--	--	--