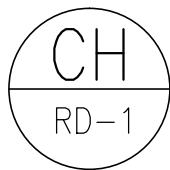


SECTION

**28.00 M. WIDE ROAD RIGHT-OF-WAY
CHATEAU ROAD**



SCALE

NTS

BONIFACIO SOUTH MAIN BOULEVARD

BONIFACIO SOUTH, TAGUIG CITY



PROJECT LOCATION



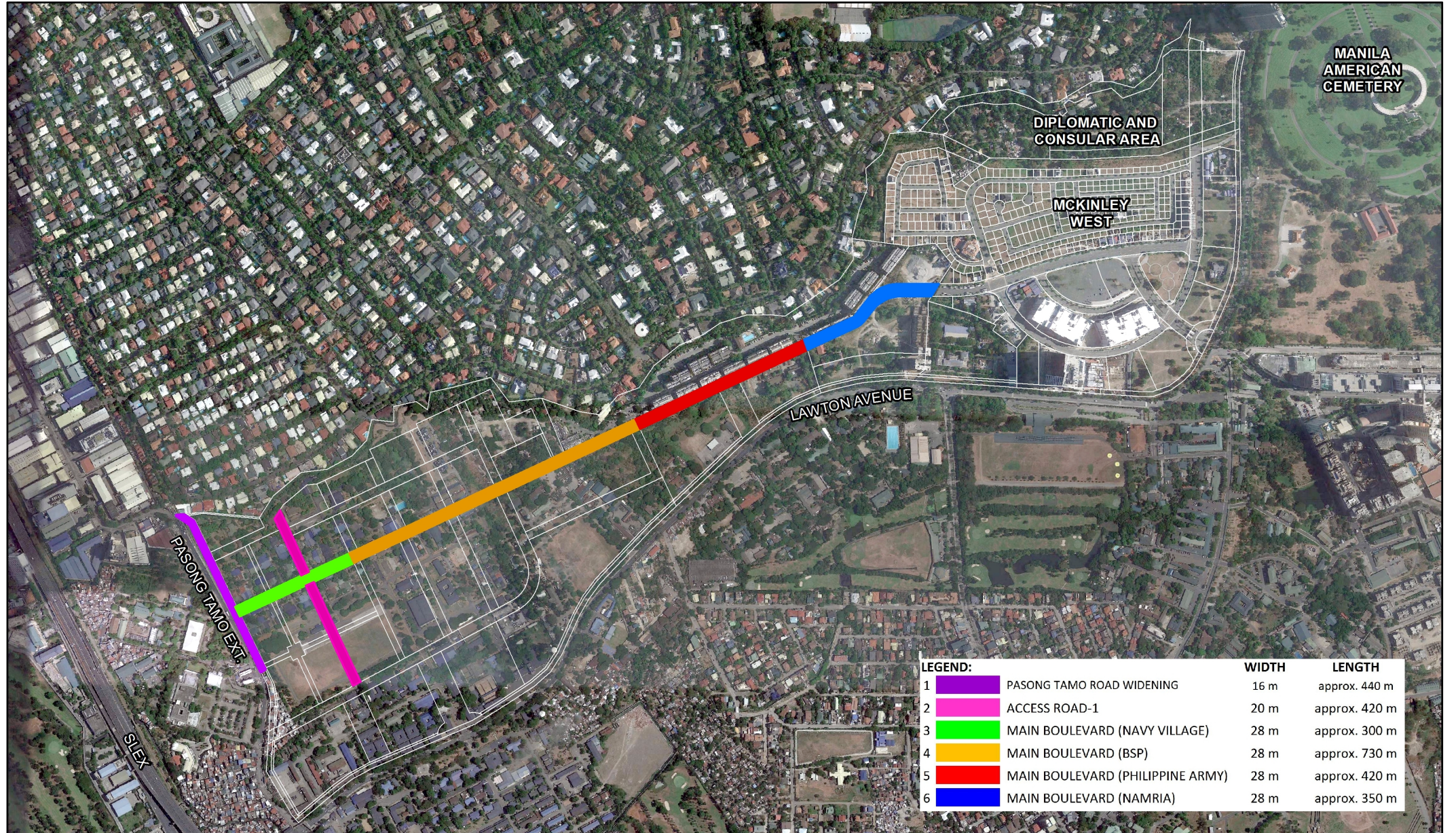
Map Notes:

Areas indicated are indicative only. Actual areas will be based on the verified and approved survey plan.

Satellite images are based from Google Earth imagery

BONIFACIO SOUTH MAIN BOULEVARD

FORT BONIFACIO, TAGUIG CITY



LEGEND:		WIDTH	LENGTH
1	PASONG TAMO ROAD WIDENING	16 m	approx. 440 m
2	ACCESS ROAD-1	20 m	approx. 420 m
3	MAIN BOULEVARD (NAVY VILLAGE)	28 m	approx. 300 m
4	MAIN BOULEVARD (BSP)	28 m	approx. 730 m
5	MAIN BOULEVARD (PHILIPPINE ARMY)	28 m	approx. 420 m
6	MAIN BOULEVARD (NAMRIA)	28 m	approx. 350 m



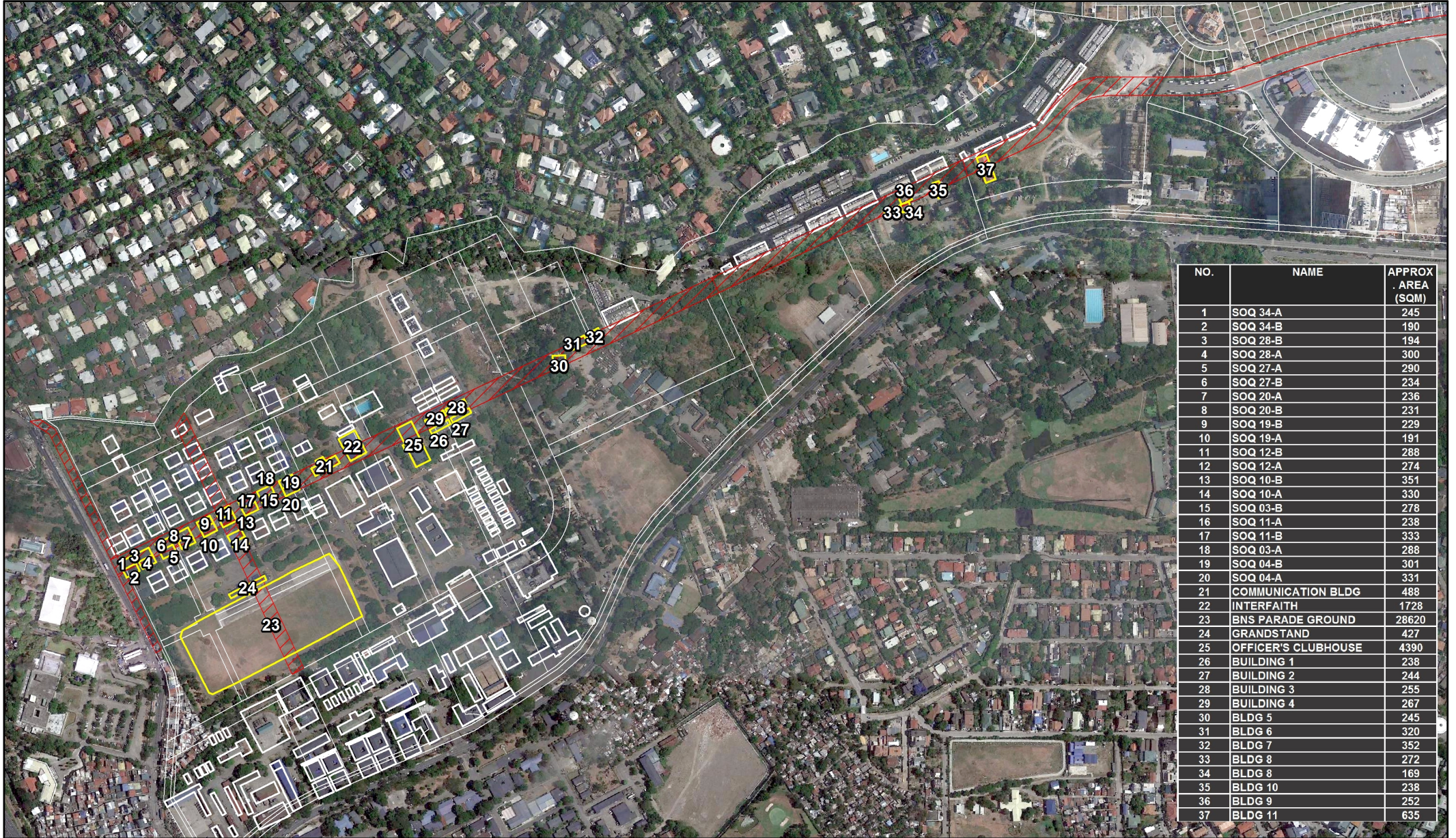
Map Notes:

Areas indicated are indicative only. Actual areas will be based on the verified and approved survey plan.

Satellite images are based from Google Earth imagery

STRUCTURES AFFECTED BY THE MAIN BOULEVARD

FORT BONIFACIO, TAGUIG CITY



NO.	NAME	APPROX. AREA (SQM)
1	SOQ 34-A	245
2	SOQ 34-B	190
3	SOQ 28-B	194
4	SOQ 28-A	300
5	SOQ 27-A	290
6	SOQ 27-B	234
7	SOQ 20-A	236
8	SOQ 20-B	231
9	SOQ 19-B	229
10	SOQ 19-A	191
11	SOQ 12-B	288
12	SOQ 12-A	274
13	SOQ 10-B	351
14	SOQ 10-A	330
15	SOQ 03-B	278
16	SOQ 11-A	238
17	SOQ 11-B	333
18	SOQ 03-A	288
19	SOQ 04-B	301
20	SOQ 04-A	331
21	COMMUNICATION BLDG	488
22	INTERFAITH	1728
23	BNS PARADE GROUND	28620
24	GRANDSTAND	427
25	OFFICER'S CLUBHOUSE	4390
26	BUILDING 1	238
27	BUILDING 2	244
28	BUILDING 3	255
29	BUILDING 4	267
30	BLDG 5	245
31	BLDG 6	320
32	BLDG 7	352
33	BLDG 8	272
34	BLDG 8	169
35	BLDG 10	238
36	BLDG 9	252
37	BLDG 11	635



Map Notes:

Areas indicated are indicative only. Actual areas will be based on the verified and approved survey plan.

Satellite images are based from Google Earth imagery